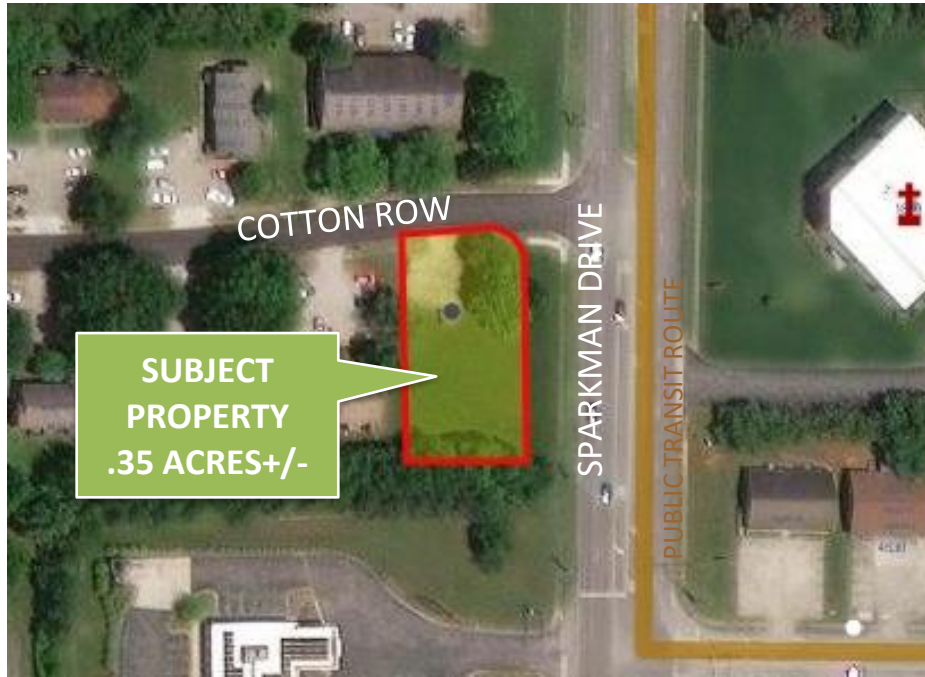




COMMERCIAL REAL ESTATE

4901 COTTON ROW DEVELOPMENT LOT



DESCRIPTION: R2A RESIDENTIAL LOT FOR SALE IN WEST HUNTSVILLE. CLOSE TO SCHOOLS, SHOPPING, RESTAURANTS, AND THE UNIVERSITY OF ALABAMA IN HUNTSVILLE CAMPUS.

LOCATION: JUST NORTH OF UNIVERSITY DRIVE ON THE S.W. CORNER OF SPARKMAN DRIVE

LAND SIZE: .35 ACRES+/-

TRAFFIC COUNT: 15,200 VEHICLES PER DAY+/-

ZONING: R2A, OPPORTUNITY & HUB ZONE

SALE PRICE: \$65,000

CONTACT: RUSSELL RUSSELL, CCIM, ALC, CEA ♦ 256-536-7777

FOR OUR MOST UP TO DATE PROPERTY INFORMATION PLEASE VISIT
RUSSRUSSELL.COM

This property is subject to prior sale or removal from the market without notice. All information shown in this brochure, while based upon information supplied by the owners and from other sources deemed reliable, is not, in any way, warranted by Russ Russell Commercial Real Estate.



923-C Merchants Walk • Huntsville, AL 35801 • (256) 536-7777
Fax: (256) 536-7710 • Website: russrussell.com