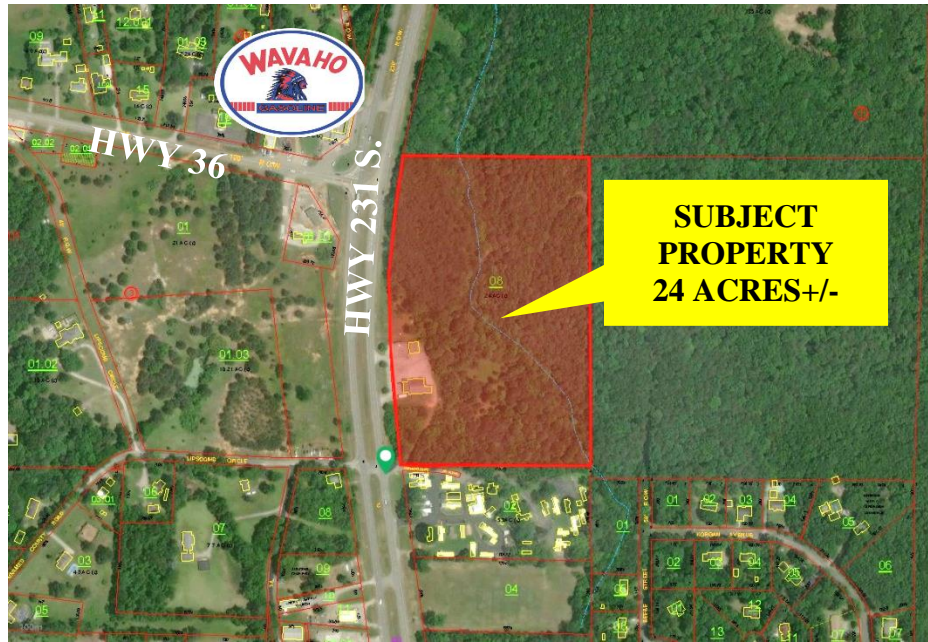




**1698 HWY. 231 S.
LACEY'S SPRING, AL**



- DESCRIPTION:** LAND WITH OVER 1,000 FEET OF HWY. FRONTAGE AND A 5,000 SF+/-BLDG. COMMERCIAL BLDG. INCLUDED ON THE PROPERTY.
- LOCATION:** SOUTH ON MEMORIAL PARKWAY. 2.43 MILES SOUTH OF THE TENNESSEE RIVER BRIDGE ON THE LEFT JUST PAST WAVAHO.
- BLDG. SIZE:** 5,000 SQ. FT.+/-
- LAND SIZE:** 23.12 ACRES+/-
- SURVEY:** ON REVERSE SIDE
- TRAFFIC COUNT:** 23,900+/- VEHICLES PER DAY
- ZONING:** MORGAN COUNTY
- SALE PRICE:** \$750,000
- CONTACT:** RUSS RUSSELL CCIM, ALC, CEA ♦ 256-536-7777

**FOR OUR MOST UP TO DATE PROPERTY INFORMATION PLEASE VISIT
www.russrussell.com.**

This property is subject to prior sale or removal from the market without notice. All information shown in this brochure, while based upon information supplied by the owners and from other sources deemed reliable, is not, in any way, warranted by Russ Russell Commercial Real Estate.



Ranger Russell
Madison County's *First*
Named Real Estate Drone



Huntsville's First CCIM



Huntsville's First ALC



Huntsville's First CEA



Ruff Russell
America's *First and ONLY*
Real Estate Mascot

923-C Merchants Walk • Huntsville, AL 35801 • (256) 536-7777

Fax: (256) 536-7710 • Website: russrussell.com

1698 HWY. 231 S. SURVEY

A part of the Southeast Quarter of the Northwest Quarter of Section 12
in Township 6 South of Range 1 West of
the Huntsville Meridian in Morgan County, Alabama.

