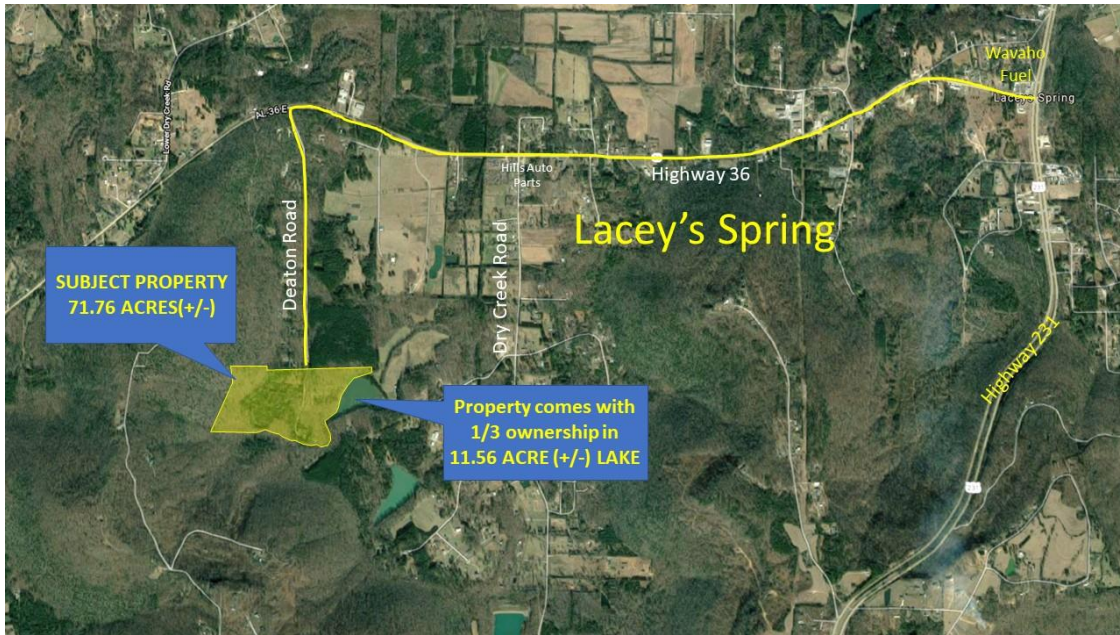




HIGHWAY 36/ DEATON ROAD LACEY'S SPRING, ALABAMA LAND



DESCRIPTION: 71.76 ACRES OF BEAUTIFUL & SECLUDED PRIVATE LAND WITH A LAKE VIEW. PROPERTY INCLUDES 1/3 INTEREST IN THE 11.56 ACRE (+/-) LAKE WHICH IS STOCKED WITH FISH.

LOCATION: FROM HUNTSVILLE GO SOUTH ON HIGHWAY 231. TURN LEFT ON HIGHWAY 36 AND GO APPROX. 2.7 MILES TO DEATON ROAD. TURN LEFT ON DEATON AND GO TO THE END OF THE ROAD.

LAND SIZE: 71.76 ACRES (+/-)

ZONING: COUNTY

SURVEY: ON REVERSE SIDE.

SALE PRICE: \$974,000

CONTACT: RUSS RUSSELL, CCIM, ALC, CEA ♦ 256-536-7777

FOR OUR MOST UP TO DATE PROPERTY INFORMATION PLEASE VISIT www.russrussell.com.

This property is subject to prior sale or removal from the market without notice. All information shown in this brochure, while based upon information supplied by the owners and from other sources deemed reliable, is not, in any way, warranted by Russ Russell Commercial Real Estate.



Ranger Russell
Madison County's *First*
Named Real Estate Drone



Huntsville's First CCIM



Huntsville's First ALC



Huntsville's First CEA

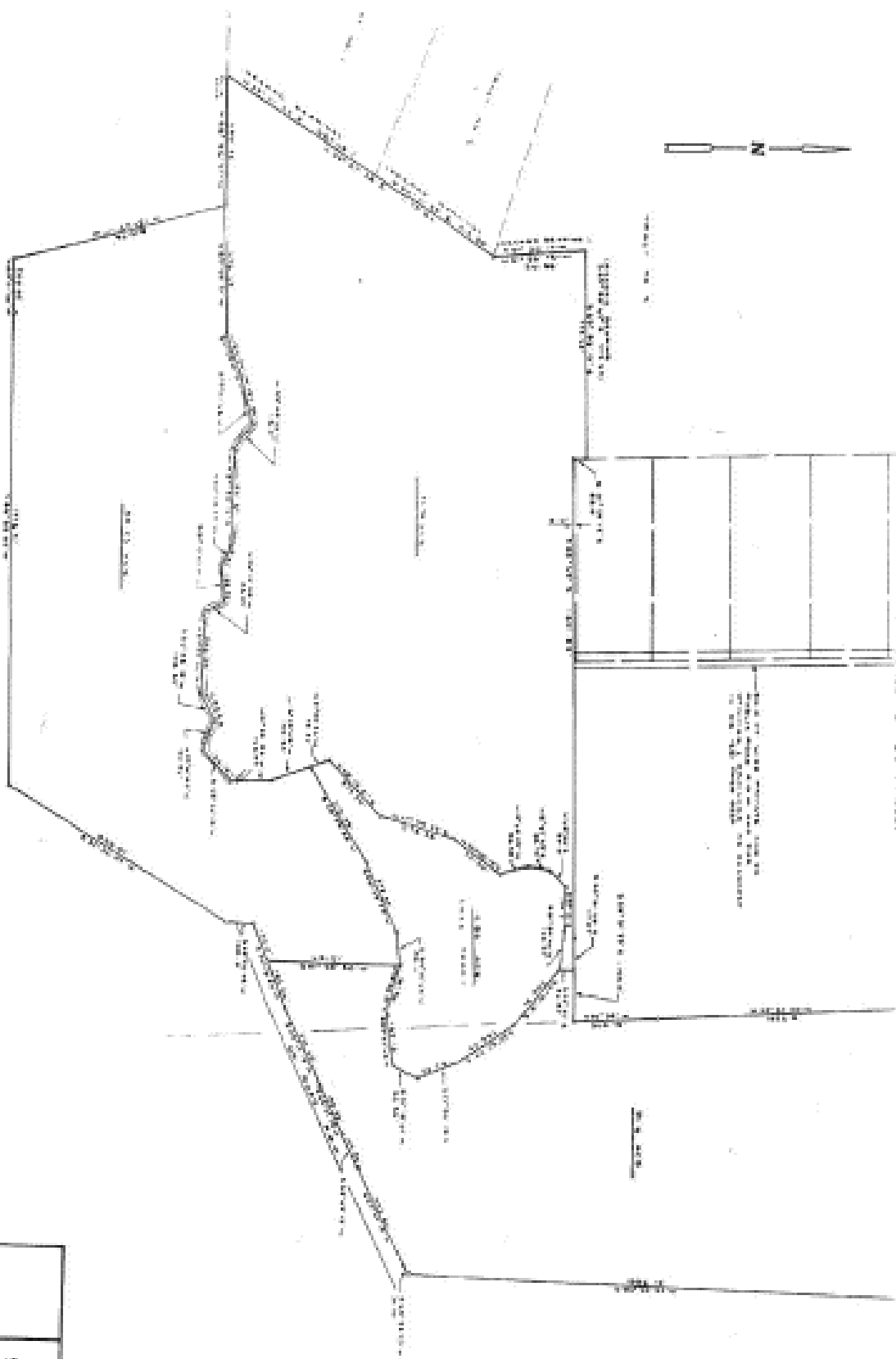


Ruff Russell
America's *First and ONLY*
Real Estate Mascot

923-C Merchants Walk • Huntsville, AL 35801 • (256) 536-7777

Fax: (256) 536-7710 • Website: russrussell.com

HWY 36 / DEATON ROAD



<p>PLAT FOR CHARLES SMITH SECTIONS 15 16 T25 R1 W MORGAN COUNTY ALABAMA</p>		<p>G. W. JONES & SONS, INC. COUNTY RECORDERS MORGAN COUNTY, ALABAMA</p>
DATE	BY	SCALE